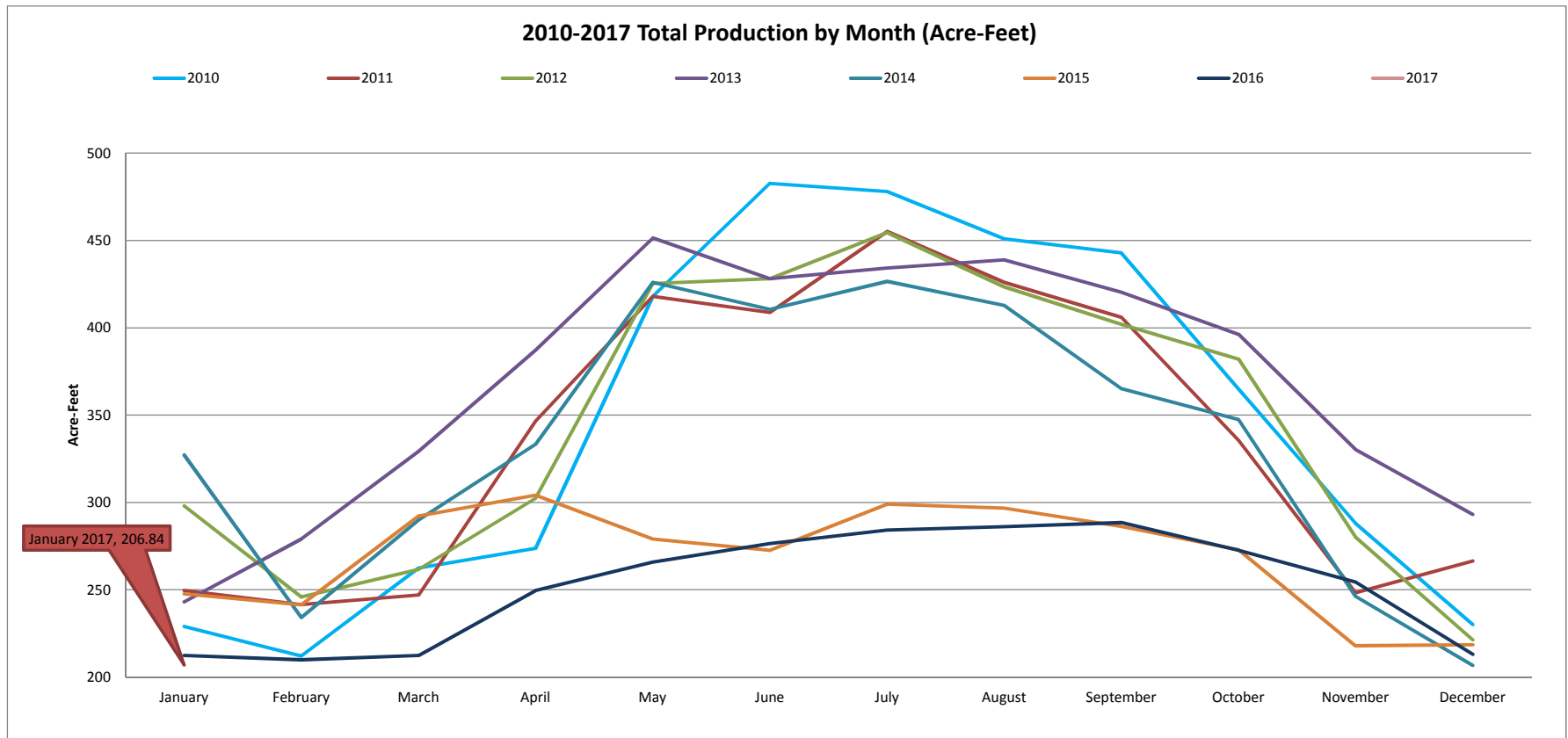


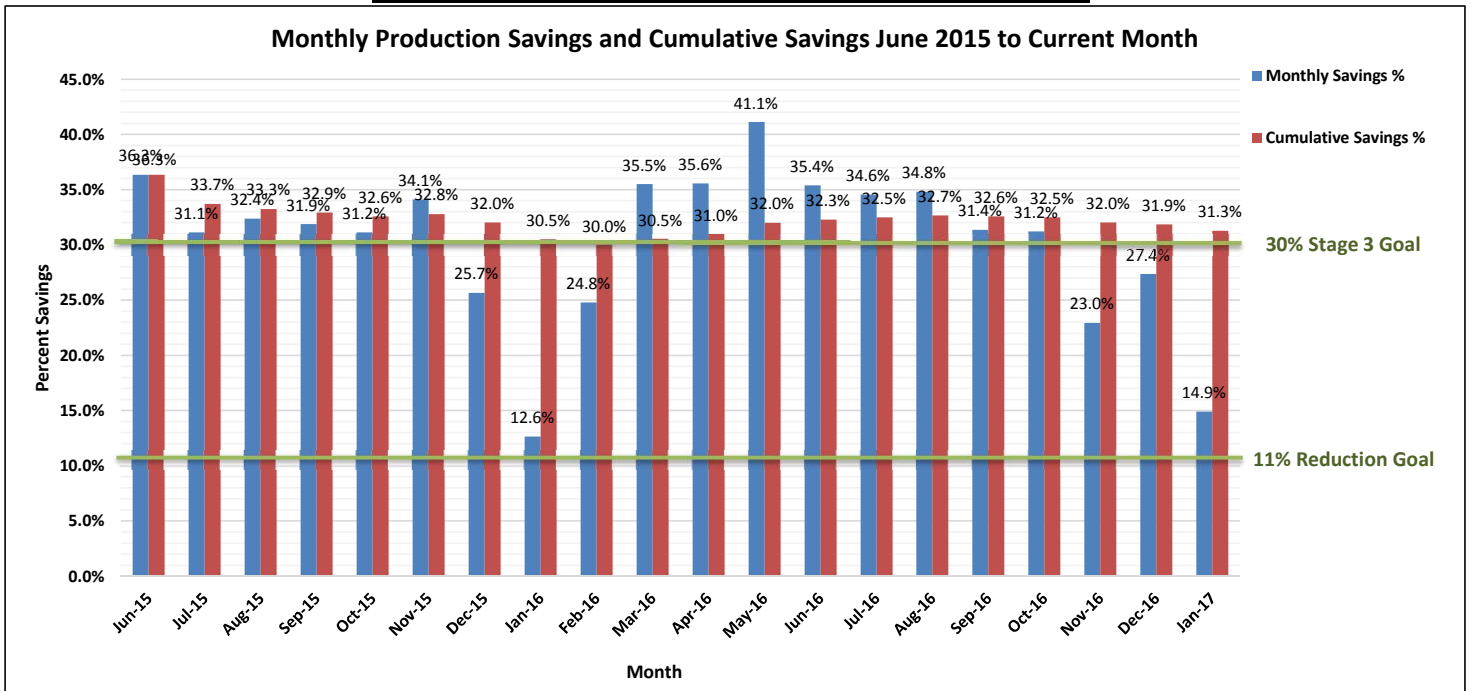
Production by Month (acre-feet)										
	2008	2009	2010	2011	2012	2013	2014	2015	2016	2017
January	250.00	339.10	228.90	249.50	297.99	243.06	327.14	247.66	212.37	206.84
February	234.00	218.80	212.10	241.52	245.82	279.08	234.16	241.34	209.91	
March	295.00	277.40	262.40	247.05	261.68	329.29	290.01	292.16	212.37	
April	355.00	349.20	273.70	346.48	302.29	387.29	333.28	304.13	249.50	
May	461.00	379.30	418.00	417.98	425.35	451.43	425.96	278.96	265.77	
June	415.00	385.50	482.70	408.78	428.11	428.11	410.62	272.52	276.51	
July	415.00	415.80	478.00	455.12	454.50	434.25	426.58	299.06	284.18	
August	410.00	395.30	451.00	425.96	423.48	438.85	412.77	296.76	286.02	
September	395.00	371.00	443.00	406.01	402.02	420.44	365.20	286.33	288.48	
October	369.00	326.80	365.00	335.59	382.08	396.27	347.40	272.82	272.52	
November	303.00	308.70	288.00	248.27	280.19	330.21	246.12	217.89	254.41	
December	267.00	270.70	230.00	266.38	221.32	293.26	206.69	218.41	212.98	
<b>TOTAL</b>	<b>4169.00</b>	<b>4037.60</b>	<b>4132.80</b>	<b>4048.64</b>	<b>4124.83</b>	<b>4431.54</b>	<b>4025.93</b>	<b>3228.04</b>	<b>3025.02</b>	<b>206.84</b>

\* Production data taken from Marina Coast Water District Well Production Summaries



Monthly Production Savings and Cumulative Savings June 2015 to Current Month

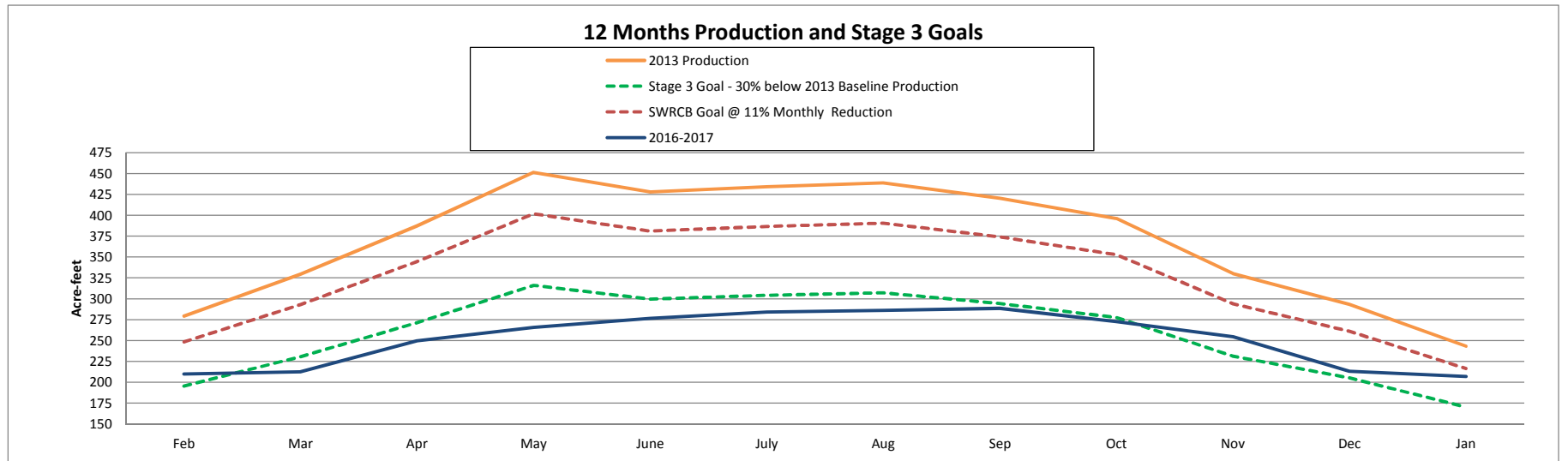
Current Month	Water Prod (AF) 2013	Recent Water Prod (AF)	Monthly Savings (AF)	Monthly Savings %	Cumulative Savings %	
Jun-15	428.11	272.52	155.59	36.3%	36.3%	
Jul-15	434.25	299.06	135.19	31.1%	33.7%	
Aug-15	438.85	296.76	142.09	32.4%	33.3%	
Sep-15	420.44	286.33	134.11	31.9%	32.9%	
Oct-15	396.27	272.82	123.45	31.2%	32.6%	
Nov-15	330.21	217.52	112.69	34.1%	32.8%	
Dec-15	293.26	218.00	75.26	25.7%	32.0%	
Jan-16	243.06	212.37	30.69	12.6%	30.5%	
Feb-16	279.08	209.91	69.17	24.8%	30.0%	
Mar-16	329.29	212.37	116.92	35.5%	30.5%	
Apr-16	387.29	249.50	137.79	35.6%	31.0%	
May-16	451.43	265.77	185.66	41.1%	32.0%	
Jun-16	428.11	276.51	151.60	35.4%	32.3%	
Jul-16	434.25	284.18	150.07	34.6%	32.5%	
Aug-16	438.85	286.02	152.83	34.8%	32.7%	
Sep-16	420.44	288.48	131.96	31.4%	32.6%	
Oct-16	396.27	272.52	123.75	31.2%	32.5%	
Nov-16	330.21	254.41	75.80	23.0%	32.0%	
Dec-16	293.26	212.98	80.28	27.4%	31.9%	
Current Month	Jan-17	243.06	206.84	36.22	14.9%	31.3%
Feb-17	279.08	0.00	279.08	100.0%	33.8%	
Mar-17	329.29	0.00	329.29	100.0%	36.5%	
Apr-17	387.29	0.00	387.29	100.0%	39.4%	
May-17	451.43	0.00	451.43	100.0%	44.8%	
Jun-17	428.11	0.00	428.11	100.0%	45.2%	
Jul-17	434.25	0.00	434.25	100.0%	47.6%	
Aug-17	438.85	0.00	438.85	100.0%	49.9%	
Sep-17	420.44	0.00	420.44	100.0%	51.9%	
Oct-17	396.27	0.00	396.27	100.0%	53.6%	
Nov-17	330.21	0.00	330.21	100.0%	55.0%	
Dec-17	293.26	0.00	293.26	100.0%	56.1%	
Total	6549	4421	2129		32.6%	



### Monthly Production Reduction Performance

Acre-Feet											
	*2013 Production	Stage Three 30% Savings Goal	SWRCB Goal @ 11% Monthly Reduction	*2014 Production	2014 Performance Beyond 30% Goal Below 30% Goal	*2015 Production	2015 Performance Beyond 30% Goal Below 30% Goal	*2016 Production	2016 Performance Beyond 30% Goal Below 30% Goal	*2017 Production	2017 Performance Beyond 30% Goal Below 30% Goal
<b>Jan</b>	243.06	170.14	216.32	327.14	157.00	247.66	77.52	212.37	42.23	206.84	36.70
<b>Feb</b>	279.08	195.36	248.38	234.16	38.80	241.34	45.98	209.91	14.55		
<b>Mar</b>	329.29	230.50	293.07	290.01	59.51	292.16	61.66	212.37	-18.13		
<b>Apr</b>	387.29	271.10	344.69	333.28	62.18	304.13	33.03	249.5	-21.60		
<b>May</b>	451.43	316.00	401.77	425.96	109.96	278.96	-37.04	265.77	-50.23		
<b>June</b>	428.11	299.68	381.02	410.62	110.94	272.52	-27.16	276.51	-23.17		
<b>July</b>	434.25	303.98	386.48	426.58	122.61	299.06	-4.91	284.18	-19.80		
<b>Aug</b>	438.85	307.20	390.58	412.77	105.58	296.76	-10.44	286.02	-21.18		
<b>Sep</b>	420.44	294.31	374.19	365.2	70.89	286.33	-7.98	288.48	-5.83		
<b>Oct</b>	396.27	277.39	352.68	347.4	70.01	272.82	-4.57	272.52	-4.87		
<b>Nov</b>	330.21	231.15	293.89	246.12	14.97	217.52	-13.63	254.41	23.26		
<b>Dec</b>	293.26	205.28	261.00	206.69	1.41	218.41	13.13	212.98	7.70		

\* Production data taken from Marina Coast Water District Well Production Summaries



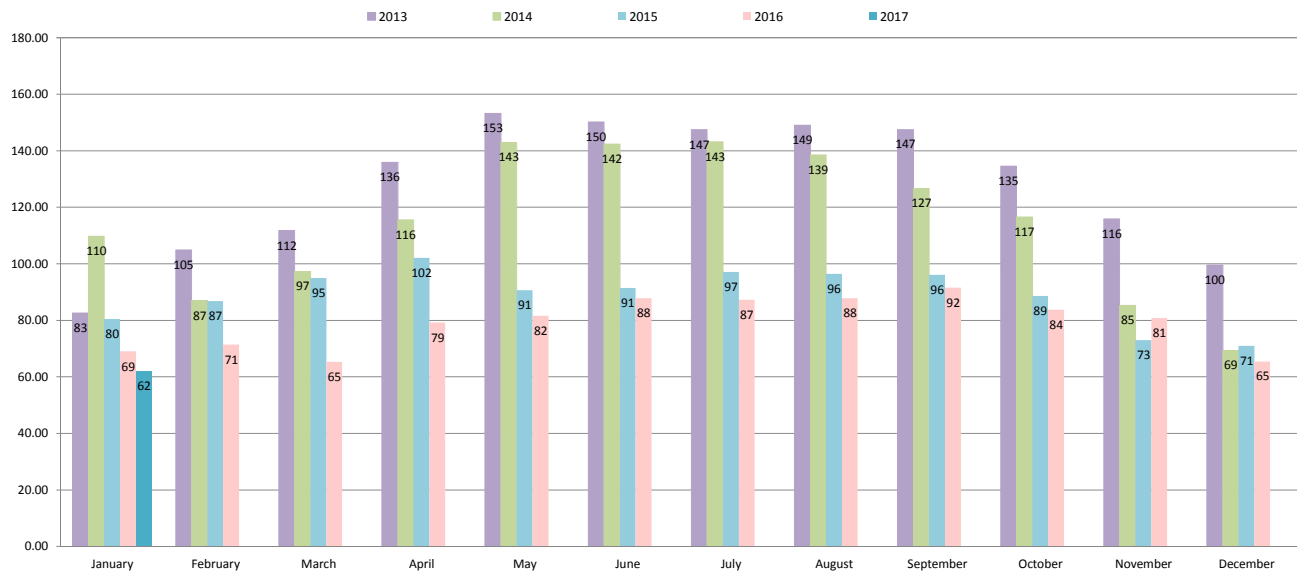
2016					
# of days		Production (AF)	Production (Gallons)	Population	GPCD
31	January	212.37	69,200,976.87	32,375	68.95
28	February	209.91	68,399,383.41	34,235	71.35
31	March	212.37	69,200,976.87	34,235	65.20
30	April	249.5	81,299,824.50	34,235	79.16
31	May	265.77	86,601,420.27	34,235	81.60
30	June	276.51	90,101,060.01	34,235	87.73
31	July	284.18	92,600,337.18	34,235	87.25
31	August	286.02	93,199,903.02	34,235	87.82
30	September	288.48	94,001,496.48	34,235	91.53
31	October	272.52	88,800,914.52	34,235	83.67
30	November	254.41	82,899,752.91	34,235	80.72
31	December	212.98	69,399,745.98	34,235	65.39
365	2016 Year	3025.02	985,705,792.02	34,235	78.88

2017					
# of days		Production (AF)	Production (Gallons)	Population	GPCD
31	January	206.84	67,399,020.84	34,980	62.15
28	February		0.00	34,980	0.00
31	March		0.00	34,980	0.00
30	April		0.00	34,980	0.00
31	May		0.00	34,980	0.00
30	June		0.00	34,980	0.00
31	July		0.00	34,980	0.00
31	August		0.00	34,980	0.00
30	September		0.00	34,980	0.00
31	October		0.00	34,980	0.00
30	November		0.00	34,980	0.00
31	December		0.00	34,980	0.00
365	2017 Year	206.84	67,399,020.84	34,980	5.28

### District Baseline and GPCD Targets (Gross Production)

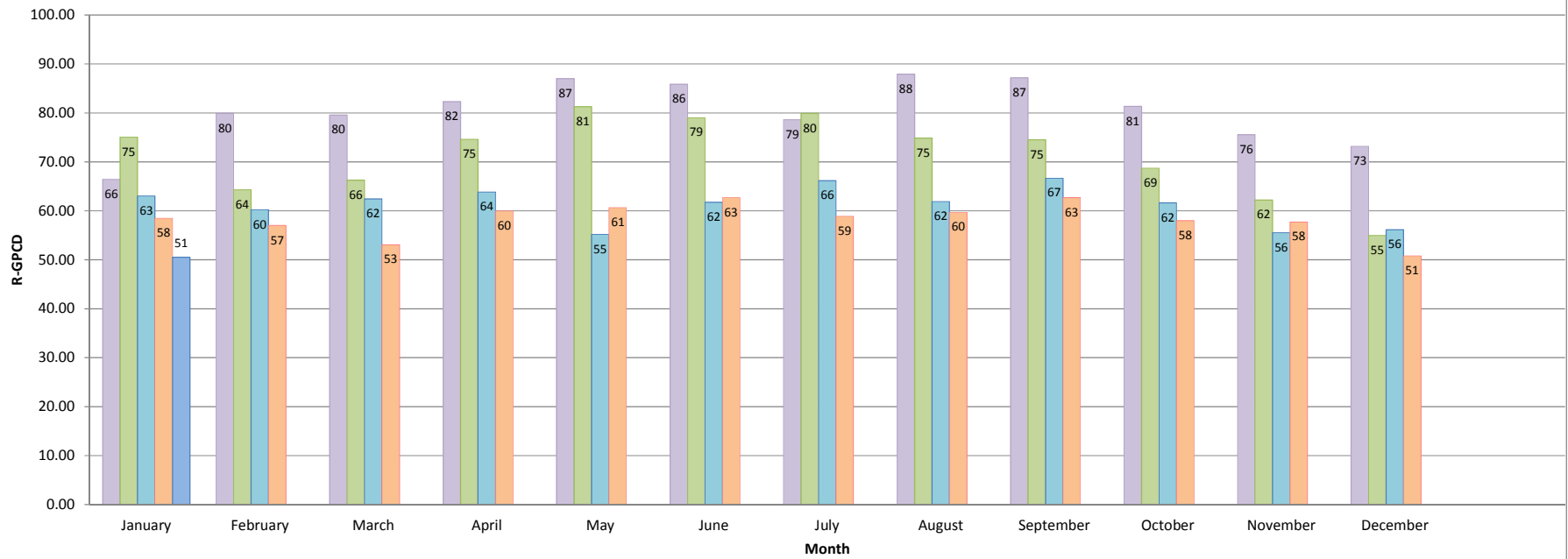
Description	Year	Amount (gpcd)
Baseline GPCD	2008	133
Maximum Allowable Target	2020	126
Interim GPCD Target	2015	125
2020 GPCD Target	2020	117
2014 GPCD	2014	115
2015 GPCD	2015	89
2016 GPCD	2016	79
2017 GPCD	2017	5

### 2013-2017 Monthly Gallons Per Capita Day (Gross Production)



### 2013-2017 Residential Gallons-per-Capita-Day

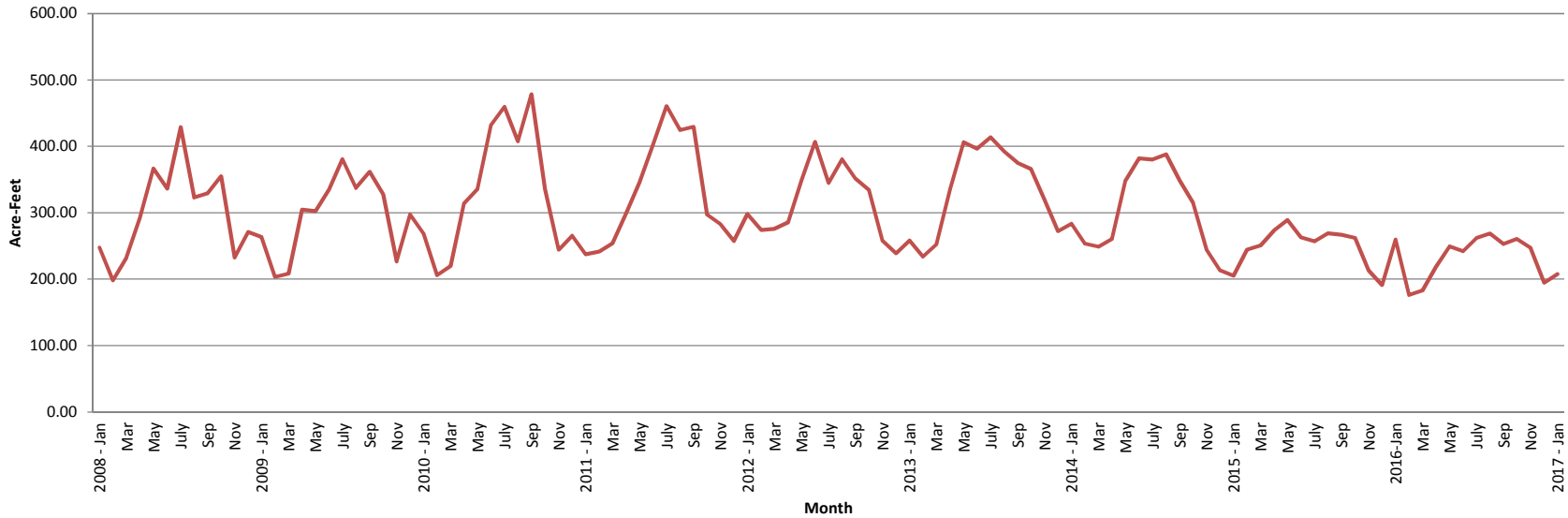
2013 2014 2015 2016 2017



Annual Total Estimated Consumption by Month (Acre-Feet)

	2008	2009	2010	2011	2012	2013	2014	2015	2016	2017
January	247.67	263.53	268.67	237.52	297.91	258.43	283.58	205.30	259.91	207.78
February	198.52	203.24	205.89	241.48	274.32	233.82	253.28	244.47	176.27	
March	232.79	208.08	220.13	254.20	275.92	252.54	248.67	250.91	182.79	
April	292.16	305.05	314.48	298.94	285.28	336.00	260.80	273.19	218.77	
May	366.50	302.44	336.18	346.00	349.02	406.24	348.87	288.98	249.56	
June	336.62	335.01	432.19	402.48	406.93	396.64	381.85	263.02	242.17	
July	429.20	380.63	459.50	460.59	345.06	413.76	380.15	256.84	261.83	
August	322.95	337.48	407.87	424.59	380.61	392.26	387.74	269.34	268.94	
September	329.35	361.62	478.48	429.27	351.55	375.33	348.87	266.76	253.09	
October	355.18	327.83	335.42	297.07	334.00	366.01	314.94	261.86	260.78	
November	232.73	226.62	244.55	282.55	257.89	319.91	244.46	213.44	247.60	
December	270.89	297.50	265.62	257.27	239.06	272.18	213.03	190.92	194.90	
<b>Total</b>	<b>3614.56</b>	<b>3549.05</b>	<b>3968.99</b>	<b>3931.94</b>	<b>3797.56</b>	<b>4023.12</b>	<b>3666.23</b>	<b>2985.04</b>	<b>2816.62</b>	<b>207.78</b>

2008 - 2017 Annual Total Consumption by Month (Acre-Feet)



**Metered + Unmetered Consumption (Acre-Feet)  
2013 - 2017**

\*\*\*Metered Consumption calculated from spreadsheet 2013-17 ConsumptionByCategory by adding all metered categories together per month (single family metered consumption+ commercial/institutional metered consumption +multi-family metered consumption +landscape irrigation metered consumption)\*\*\*

Metered Consumption				
	2013	2014	2015	2016
Jan	227.01	260.74	172.66	239.08
Feb	202.40	230.44	223.34	155.44
Mar	221.12	225.83	229.77	160.41
Apr	304.58	237.96	252.06	196.38
May	374.82	326.03	267.95	227.18
June	365.23	359.01	242.02	219.79
July	382.35	357.31	235.70	243.28
Aug	360.84	364.90	248.20	250.39
Sep	343.91	326.03	245.63	234.54
Oct	334.59	292.10	240.72	242.07
Nov	288.49	221.62	192.62	228.88
Dec	240.77	190.19	170.09	176.16
<b>TOTAL</b>	<b>3646.12</b>	<b>3392.15</b>	<b>2720.77</b>	<b>2573.60</b>

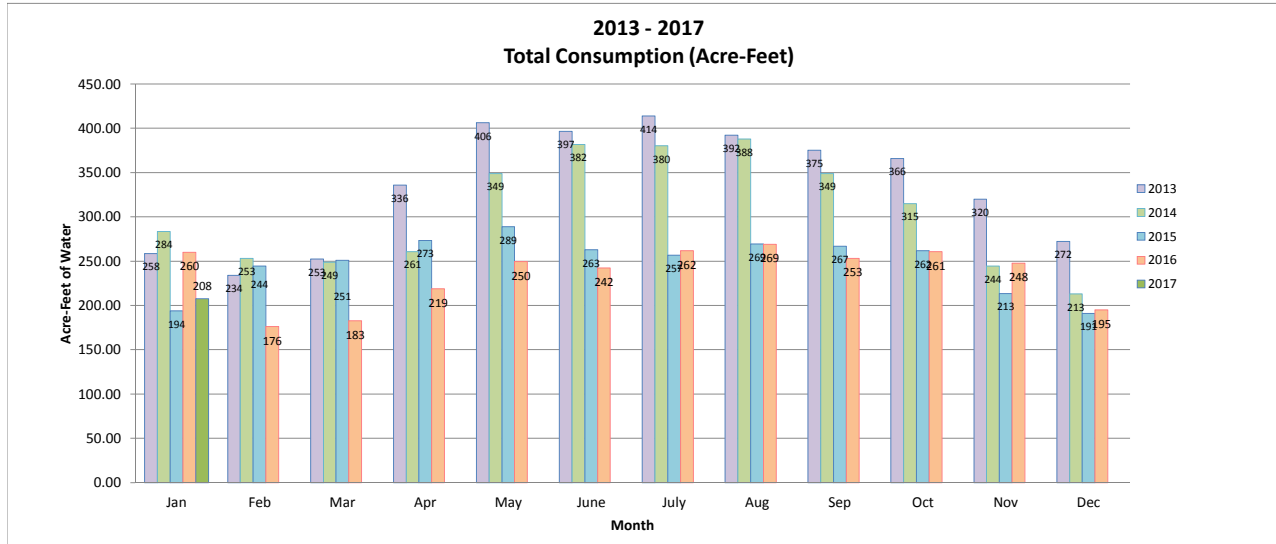
Estimated Unmetered Consumption				
	2013	2014	2015	2016
Jan	31.42	22.84	21.28	20.83
Feb	31.42	22.84	21.14	20.83
Mar	31.42	22.84	21.14	22.38
Apr	31.42	22.84	21.14	22.38
May	31.42	22.84	21.02	22.38
June	31.42	22.84	21.00	22.38
July	31.42	22.84	21.14	18.55
Aug	31.42	22.84	21.14	18.55
Sep	31.42	22.84	21.14	18.55
Oct	31.42	22.84	21.14	18.71
Nov	31.42	22.84	20.83	18.71
Dec	31.42	22.84	20.83	18.74
<b>TOTAL</b>	<b>377.00</b>	<b>274.12</b>	<b>252.91</b>	<b>242.99</b>

Total Consumption				
	2013	2014	2015	2016
Jan	258.43	283.58	193.94	259.91
Feb	233.82	253.28	244.47	176.27
Mar	252.54	248.67	250.91	182.79
Apr	336.00	260.80	273.19	218.76
May	406.24	348.87	288.98	249.56
June	396.64	381.85	263.02	242.17
July	413.76	380.15	256.84	261.83
Aug	392.26	387.74	269.34	268.94
Sep	375.33	348.87	266.76	253.09
Oct	366.01	314.94	261.86	260.78
Nov	319.91	244.46	213.44	247.59
Dec	272.18	213.03	190.92	194.90
<b>TOTAL</b>	<b>4023.12</b>	<b>3666.27</b>	<b>2973.68</b>	<b>2816.59</b>

Metered Consumption				
	2017	2018	2019	2020
Jan	189.04			
Feb				
Mar				
Apr				
May				
June				
July				
Aug				
Sep				
Oct				
Nov				
Dec				
<b>TOTAL</b>	<b>189.04</b>			

Estimated Unmetered Consumption				
	2017	2018	2019	2020
Jan	18.74			
Feb				
Mar				
Apr				
May				
June				
July				
Aug				
Sep				
Oct				
Nov				
Dec				
<b>TOTAL</b>	<b>18.74</b>			

Total Consumption				
	2017	2018	2019	2020
Jan	207.78			
Feb				
Mar				
Apr				
May				
June				
July				
Aug				
Sep				
Oct				
Nov				
Dec				
<b>TOTAL</b>	<b>207.78</b>			



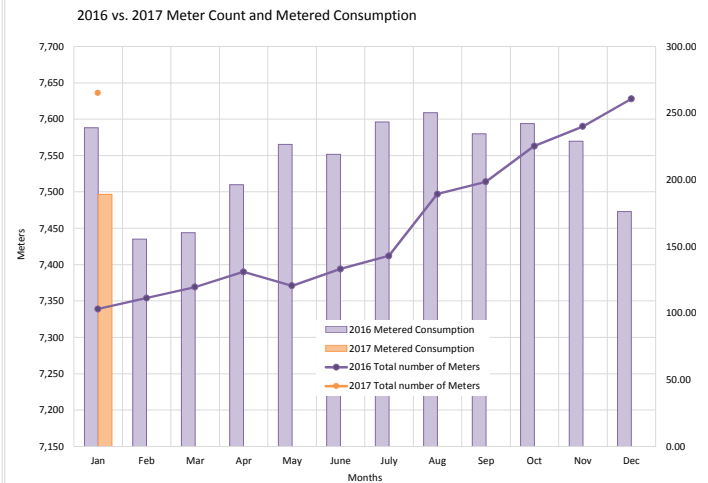
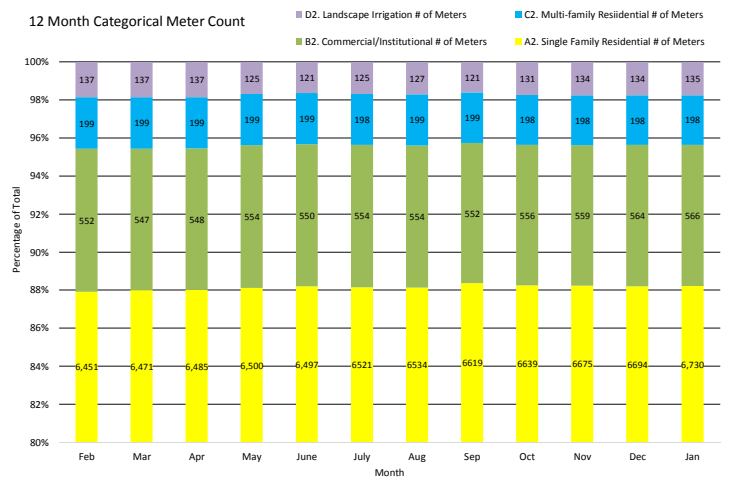
\*2013 metered consumption figures taken from "2013 Water System Statistics" - hundred cubic feet figures from "Section 4. Metered Water Deliveries Table" converted to AF.

\* Monthly Estimated Unmetered Residential number was found by the annual estimation for 2014 of 274.12 AF and the annual estimation for

\* Monthly Estimated Unmetered Residential figures for 2015 were found by using the number of unmetered housing units in use (reported by MBMH) multiplied by 0.34 AF. EXAMPLE: (790 units in use (January 2015) \* 0.34 AF/unit = 268.6 AF/12 = 22.38 AF)

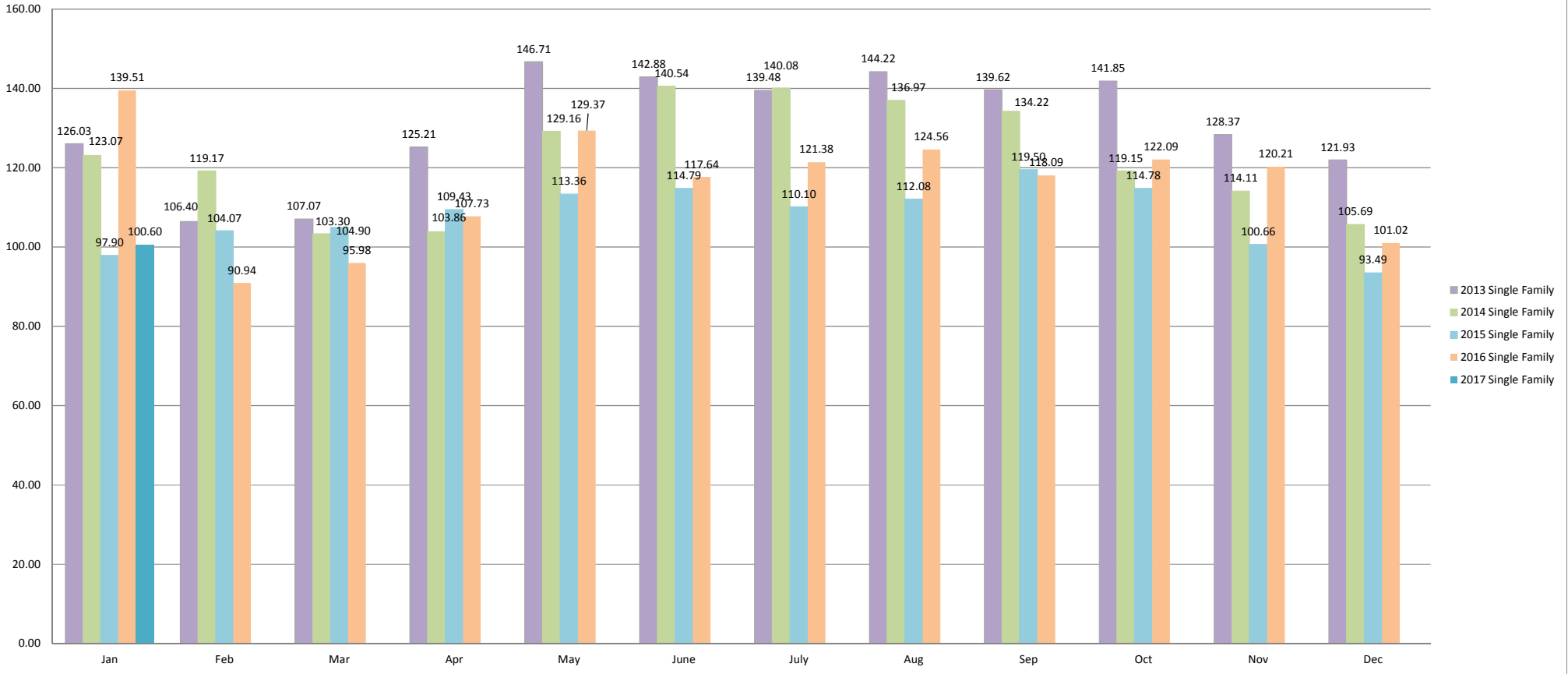
2017 Metered Consumption (Units) and # of Meters														
**This data is from Summary by Rate Code**														
<b>Marina &amp; Ord Combined</b>														
A1. Single Family Residential Metered Consumption	Jan	Feb	Mar	Apr	May	June	July	Aug	Sep	Oct	Nov	Dec	Total	95
A1. Single Family Residential Metered Consumption	41,252												41,252	
A2. Single Family Residential # of Meters	5,645													32
B1. Commercial/Institutional Metered Consumption	13,995												13,995	
B2. Commercial/Institutional # of Meters	569													56
C1. Multi-family Residential Metered Consumption	24,178												24,178	
C2. Multi-family Residential # of Meters	1,287													7
D1. Landscape Irrigation Metered Consumption	2,927												2,927	
D2. Landscape Irrigation # of Meters	135													
<b>Total Meters</b>	<b>7,636</b>	<b>0</b>	<b>0</b>	<b>0</b>	<b>0</b>	<b>0</b>	<b>0</b>	<b>0</b>	<b>0</b>	<b>0</b>	<b>0</b>	<b>0</b>		
<b>Total Metered Consumption (AF)</b>	<b>189.04</b>	<b>0.00</b>	<b>0.00</b>	<b>0.00</b>	<b>0.00</b>	<b>0.00</b>	<b>0.00</b>	<b>0.00</b>	<b>0.00</b>	<b>0.00</b>	<b>0.00</b>	<b>0.00</b>	<b>189</b>	<b>2017 TOTAL METERED CONSUMPTION</b>
<b>Marina</b>														
A1. Single Family Residential Metered Consumption	Jan	Feb	Mar	Apr	May	June	July	Aug	Sep	Oct	Nov	Dec	Total	
A1. Single Family Residential Metered Consumption	24,993												24,993	
A2. Single Family Residential # of Meters	3,463													
B1. Commercial/Institutional Metered Consumption	7,630												7,630	
B2. Commercial/Institutional # of Meters	251													
C1. Multi-family Residential Metered Consumption	15,857												15,857	
C2. Multi-family Residential # of Meters	172													
D1. Landscape Irrigation Metered Consumption	112												112	
D2. Landscape Irrigation # of Meters	36													
<b>Total Meters</b>	<b>3,922</b>	<b>0</b>	<b>0</b>	<b>0</b>	<b>0</b>	<b>0</b>	<b>0</b>	<b>0</b>	<b>0</b>	<b>0</b>	<b>0</b>	<b>0</b>		
<b>Total Metered Consumption (AF)</b>	<b>111.54</b>	<b>0.00</b>	<b>0.00</b>	<b>0.00</b>	<b>0.00</b>	<b>0.00</b>	<b>0.00</b>	<b>0.00</b>	<b>0.00</b>	<b>0.00</b>	<b>0.00</b>	<b>0.00</b>	<b>112</b>	<b>2017 TOTAL MARINA METERED CONSUMPTION</b>
<b>Ord</b>														
A1. Single Family Residential Metered Consumption	Jan	Feb	Mar	Apr	May	June	July	Aug	Sep	Oct	Nov	Dec	Total	
A1. Single Family Residential Metered Consumption	16,260												16,260	
A2. Single Family Residential # of Meters	2,182													
B1. Commercial/Institutional Metered Consumption	6,365												6,365	
B2. Commercial/Institutional # of Meters	318													
C1. Multi-family Residential Metered Consumption	8,321												8,321	
C2. Multi-family Residential # of Meters	1,115													
D1. Landscape Irrigation Metered Consumption	2,815												2,815	
D2. Landscape Irrigation # of Meters	99													
<b>Total Meters</b>	<b>3,714</b>	<b>0</b>	<b>0</b>	<b>0</b>	<b>0</b>	<b>0</b>	<b>0</b>	<b>0</b>	<b>0</b>	<b>0</b>	<b>0</b>	<b>0</b>		
<b>Total Metered Consumption (AF)</b>	<b>77.50</b>	<b>0.00</b>	<b>0.00</b>	<b>0.00</b>	<b>0.00</b>	<b>0.00</b>	<b>0.00</b>	<b>0.00</b>	<b>0.00</b>	<b>0.00</b>	<b>0.00</b>	<b>0.00</b>	<b>77</b>	<b>2017 TOTAL ORD METERED CONSUMPTION</b>

2017

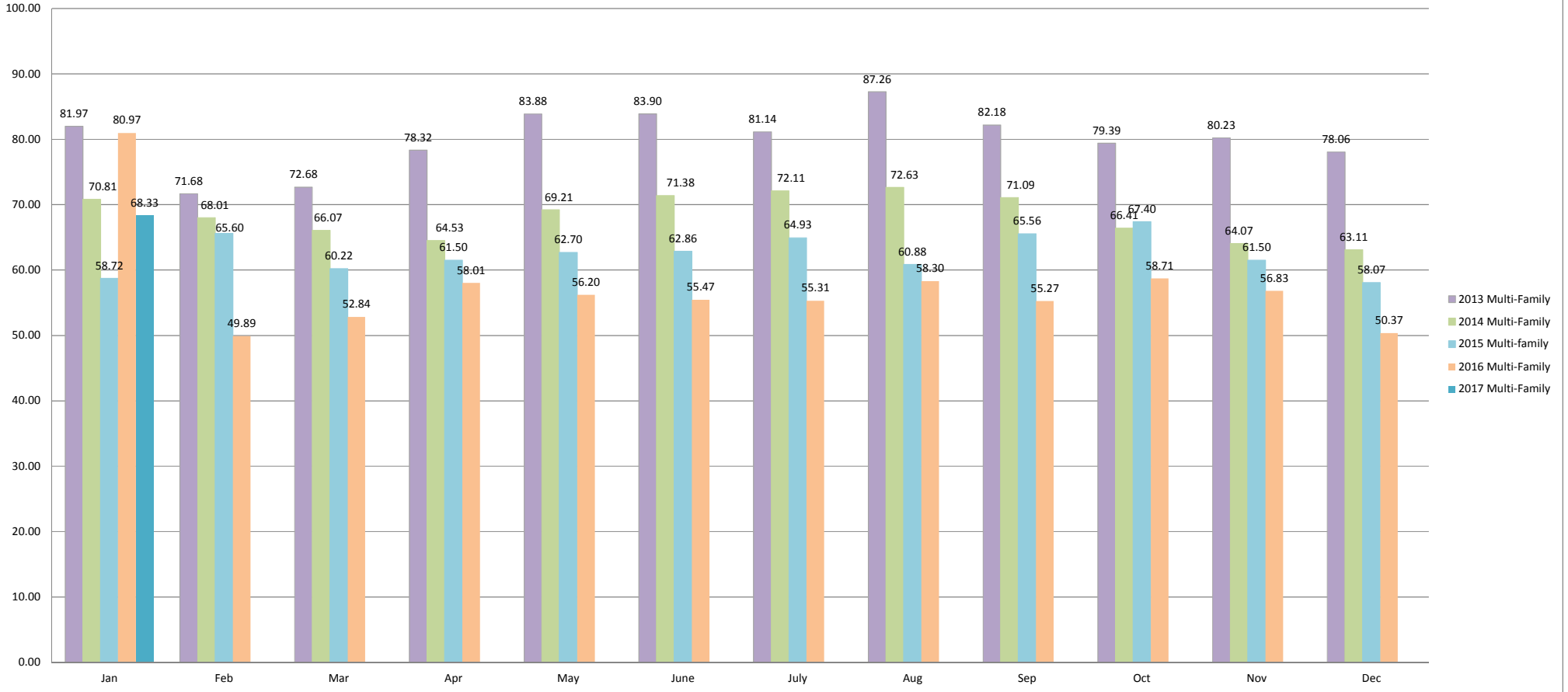




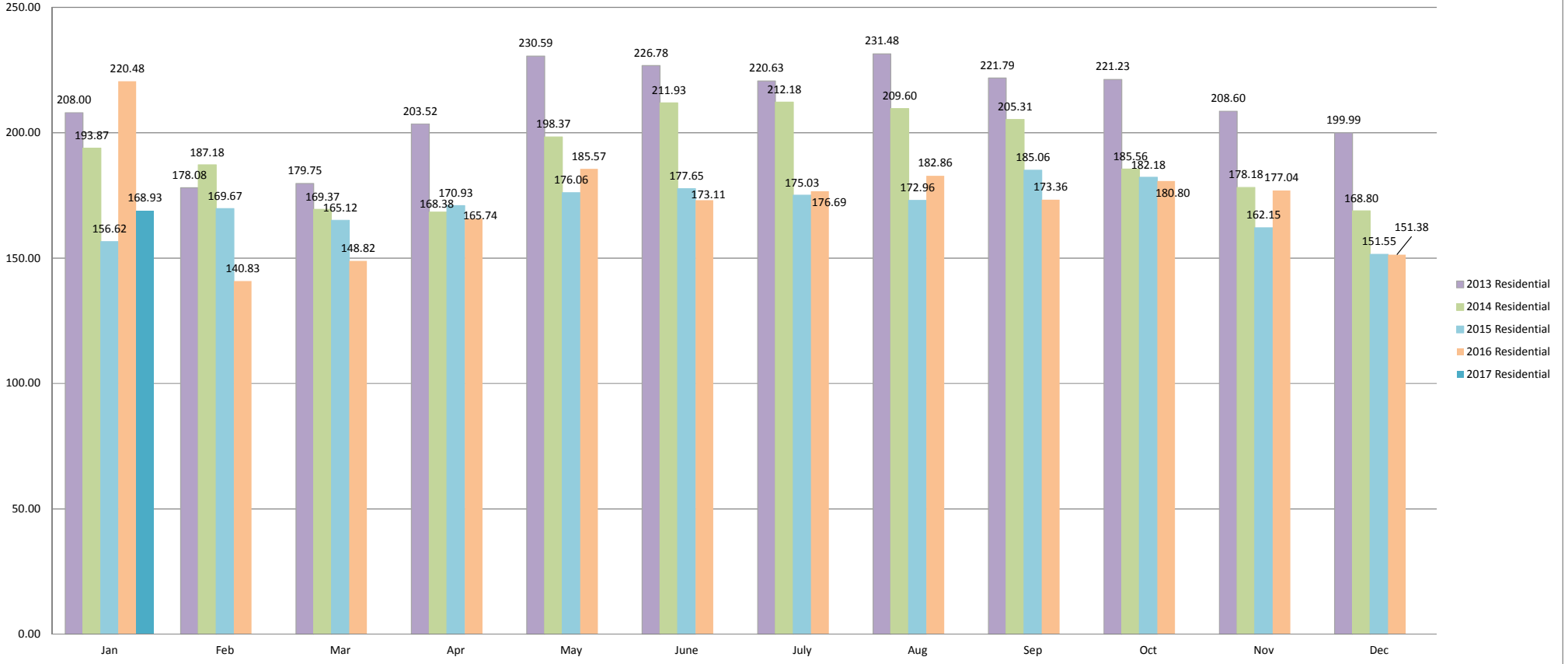
**2013-2017 Single Family Consumption by Month (Acre-Feet)**



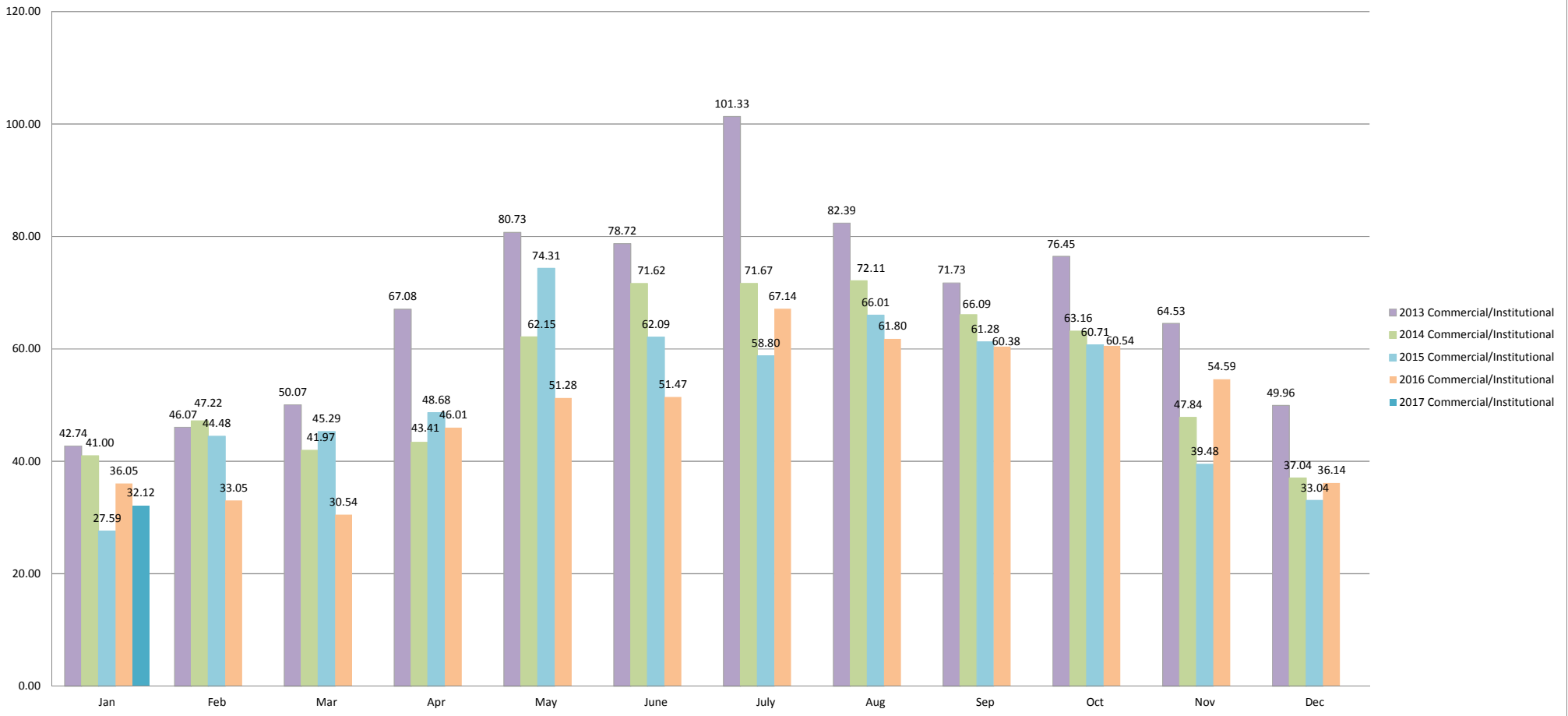
**2013-2017 Multi-Family Total Consumption by Month (Acre-Feet)**



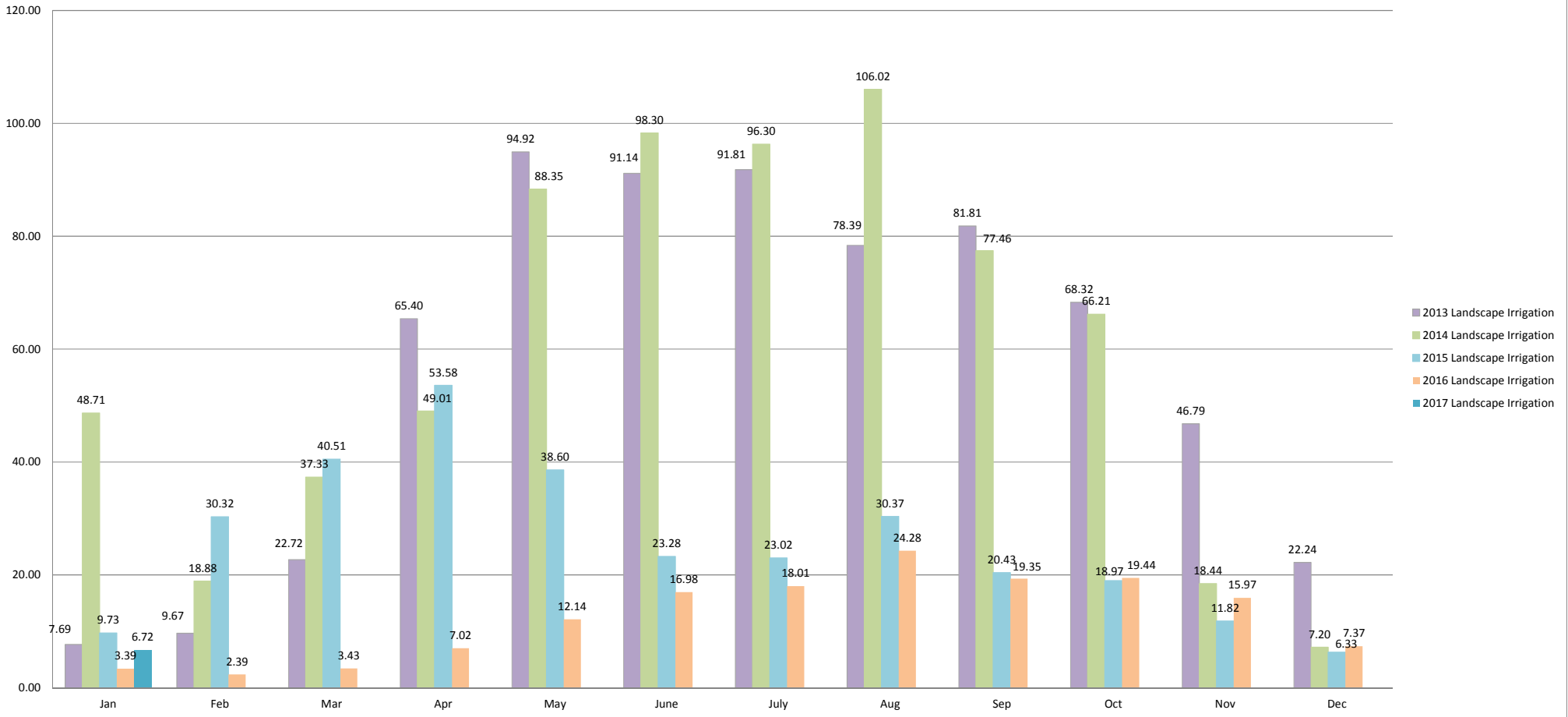
### 2013-2017 Residential Total Consumption by Month (Acre-Feet) (Single-Family and Multi-family Combined)



2013-2017 Commercial/Institutional Consumption by Month (Acre-Feet)



2013-2017 Landscape Irrigation Consumption by Month (Acre-Feet)

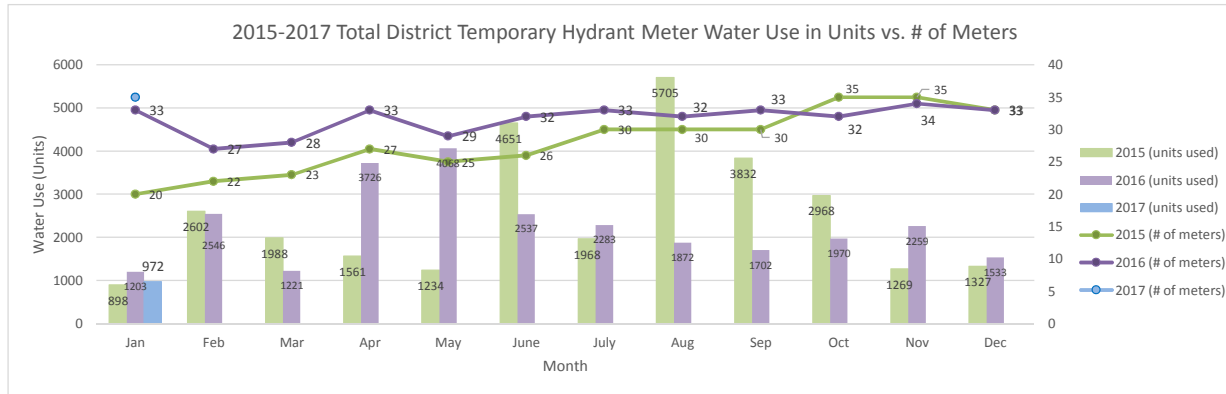


## Temporary Hydrant Meters Water Use (Units)

Marina	Jan	Feb	Mar	Apr	May	June	July	Aug	Sep	Oct	Nov	Dec
2014 (units)	2	0	1	0	14	0	0	0	5	3	1	0
2015 (units)	0	0	0	0	0	17	0	0	0	0	0	0
2016 (units)	0	0	0	1	2	0	0	2	0	0	0	0
2017 (units)	0											
2015 (# of meters)	0	0	0	0	0	1	0	0	0	0	0	0
2016 (# of meters)	1	0	1	1	1	1	1	1	1	1	1	1
2017 (# of meters)	1											

Ord	Jan	Feb	Mar	Apr	May	June	July	Aug	Sep	Oct	Nov	Dec
2014 (units)	1075	1124	2316	1655	2563	3142	4421	2732	1767	3207	960	362
2015 (units)	898	2602	1988	1561	1234	4634	1968	5705	3832	2968	1269	1327
2016 (units)	1203	2546	1221	3725	4066	2537	2283	1870	1702	1970	2259	1533
2017 (units)	972											
2015 (# of meters)	20	22	23	27	25	25	30	30	30	35	35	33
2016 (# of meters)	32	27	27	32	28	31	32	31	32	31	33	32
2017 (# of meters)	34											

TOTAL	Jan	Feb	Mar	Apr	May	June	July	Aug	Sep	Oct	Nov	Dec
2014 (units used)	1077	1124	2317	1655	2577	3142	4421	2732	1772	3210	961	362
2015 (units used)	898	2602	1988	1561	1234	4651	1968	5705	3832	2968	1269	1327
2016 (units used)	1203	2546	1221	3726	4068	2537	2283	1872	1702	1970	2259	1533
2017 (units used)	972											
2015 (# of meters)	20	22	23	27	25	26	30	30	30	35	35	33
2016 (# of meters)	33	27	28	33	29	32	33	32	33	32	34	33
2017 (# of meters)	35											



## Temporary Meter Water Use: Percentage of Total Consumption

Past 12 Months												
	Jan	Feb	Mar	Apr	May	June	July	Aug	Sep	Oct	Nov	Dec
Consumption (HCF)	90,515	76,789	79,629	95,298	108,716	105,497	114,063	117,159	110,252	113,604	107,858	84,904
Temporary Hydrant Use (HCF)	972	2546	1221	3726	4068	2537	2283	1872	1702	1970	2259	1533
Percentage	1.1%	3.3%	1.5%	3.9%	3.7%	2.4%	2.0%	1.6%	1.5%	1.7%	2.1%	1.8%